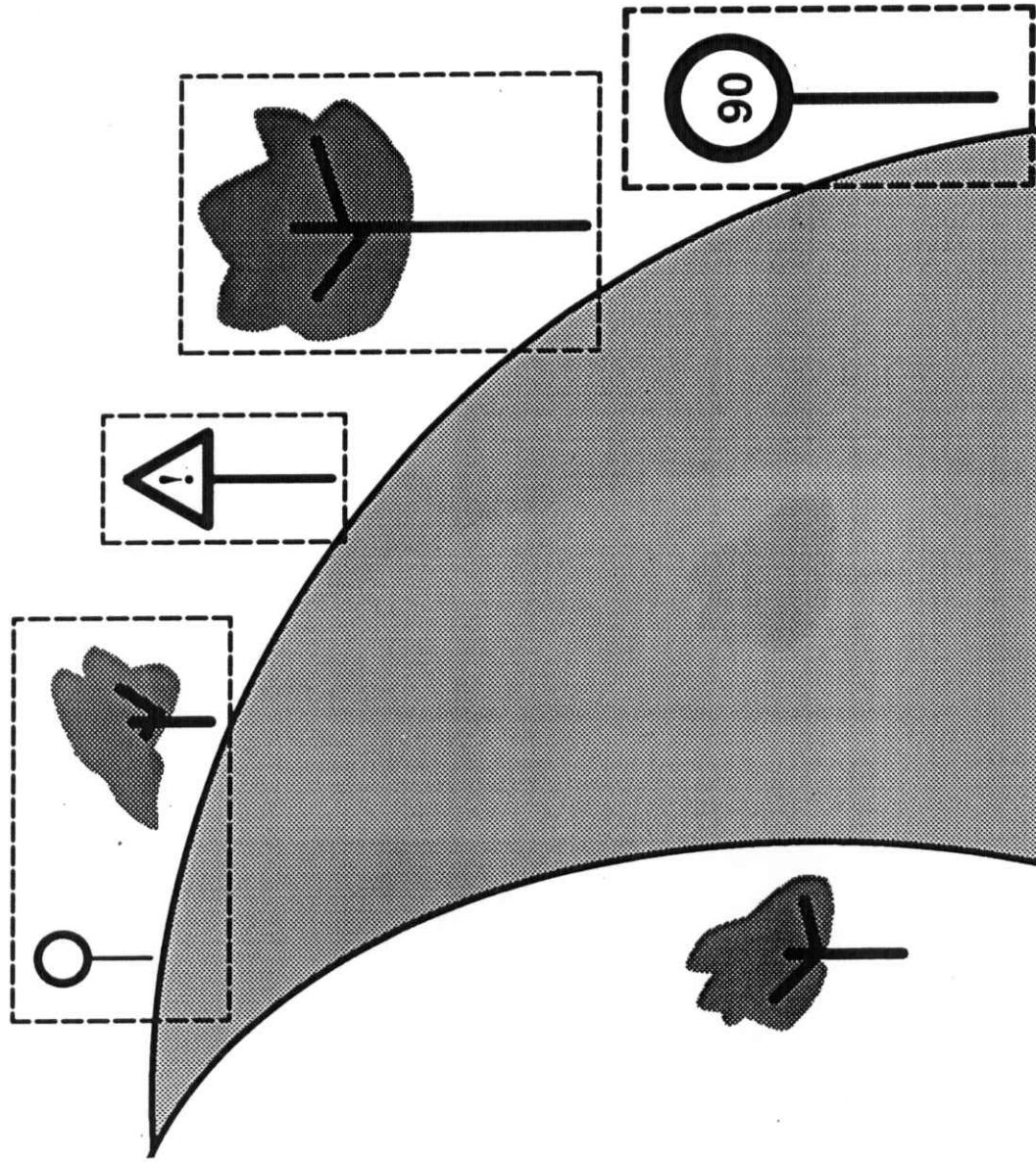
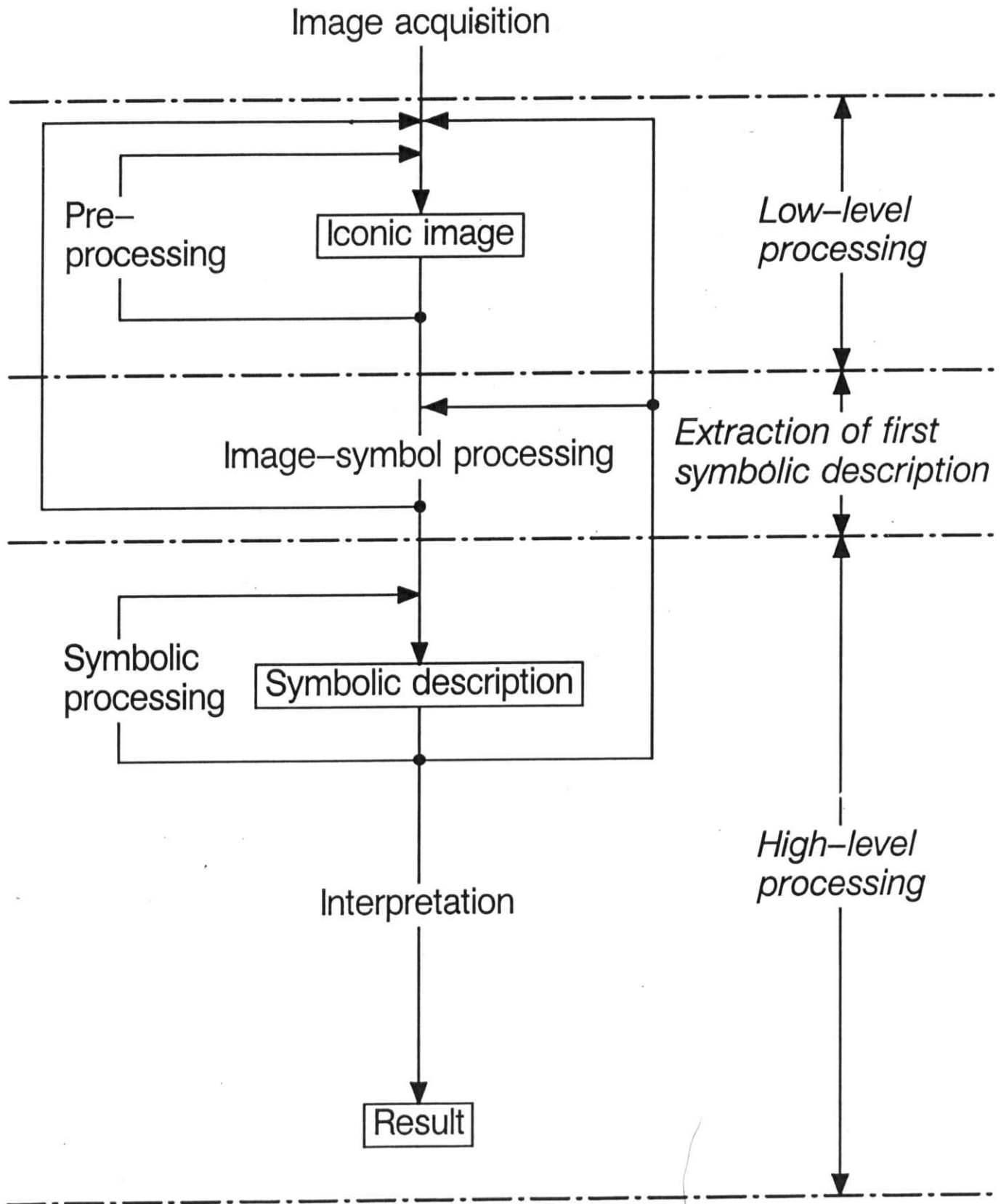
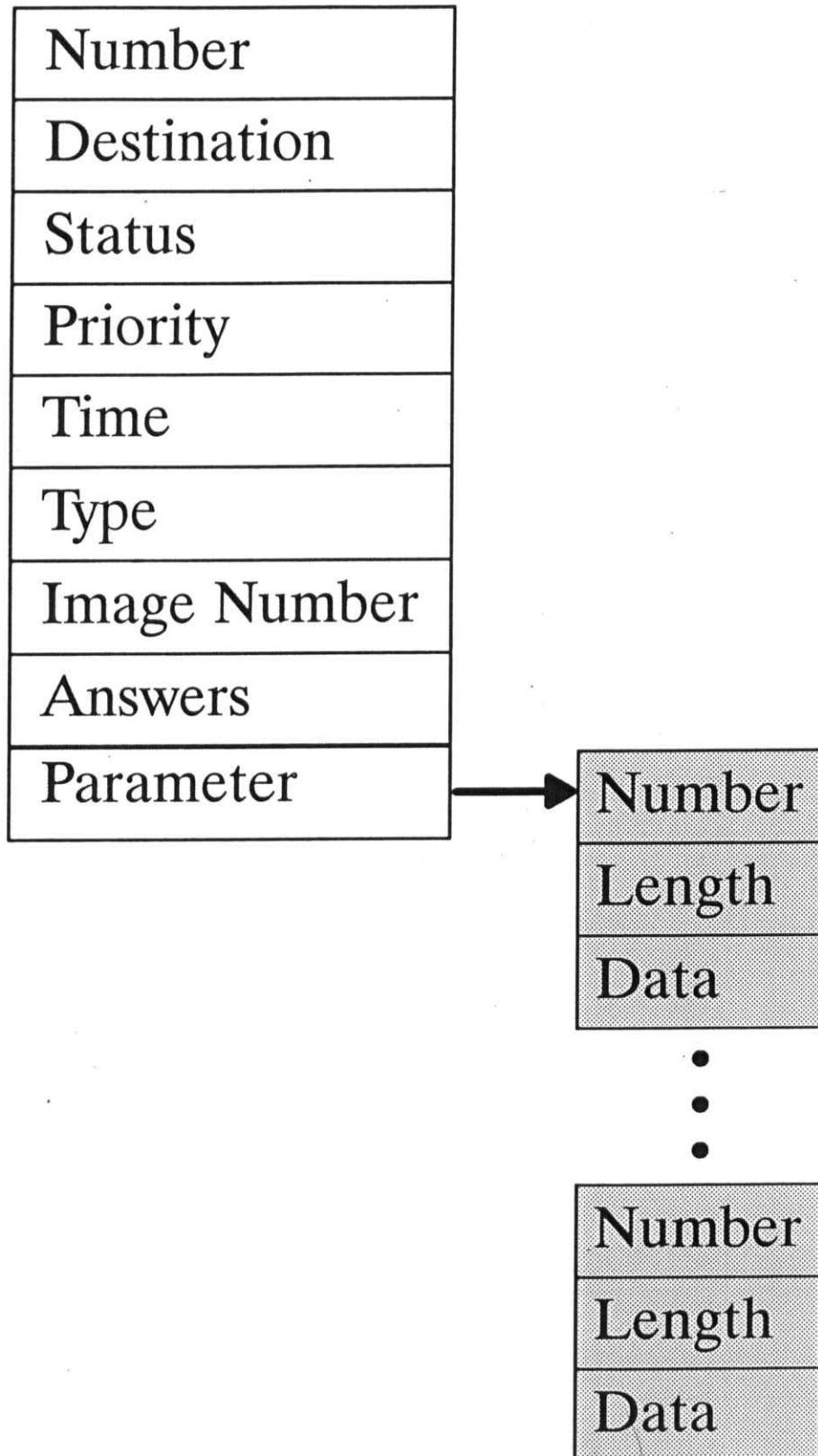


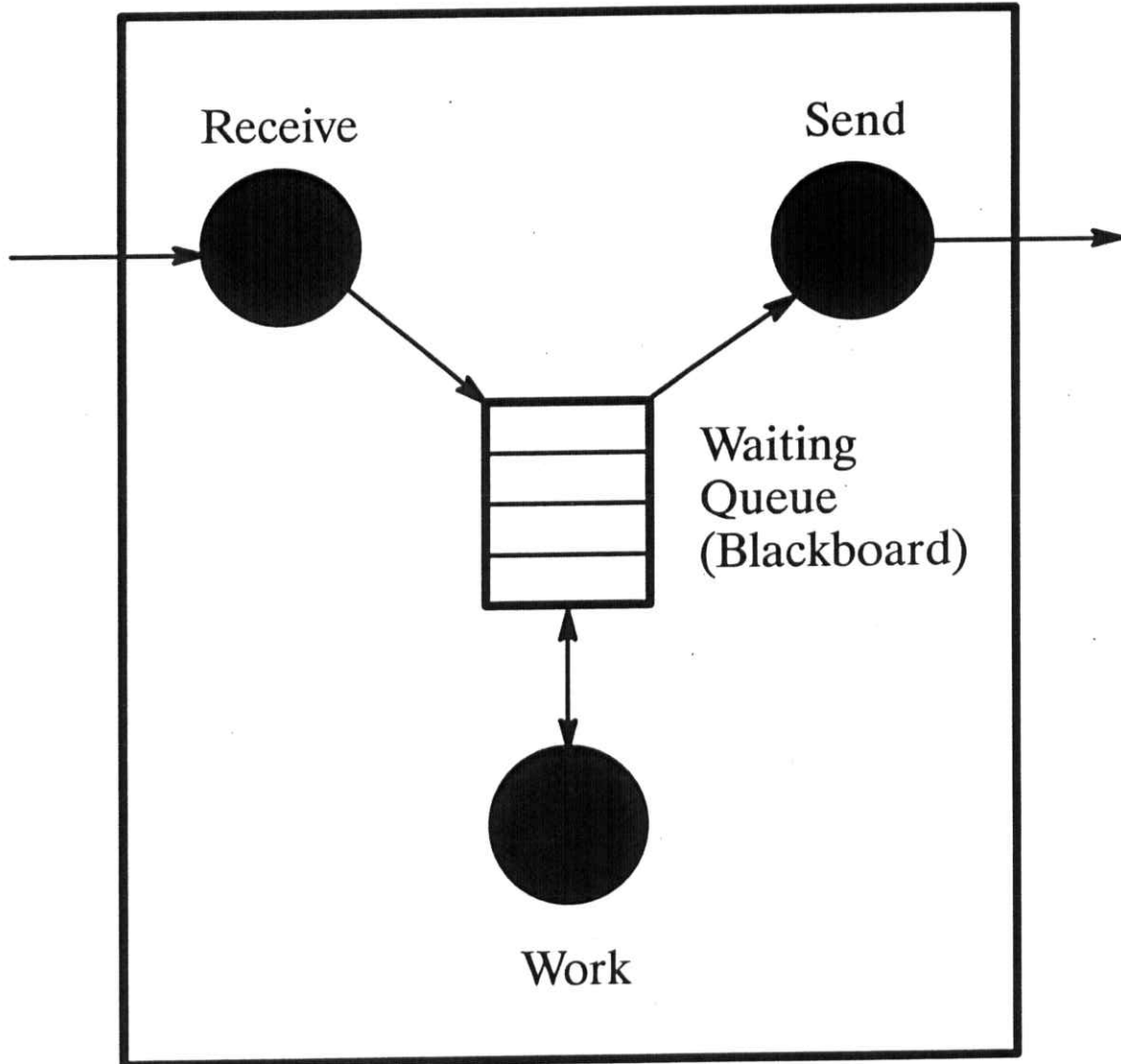
A Blackboard System For Distributed Analysis of Image Sequences

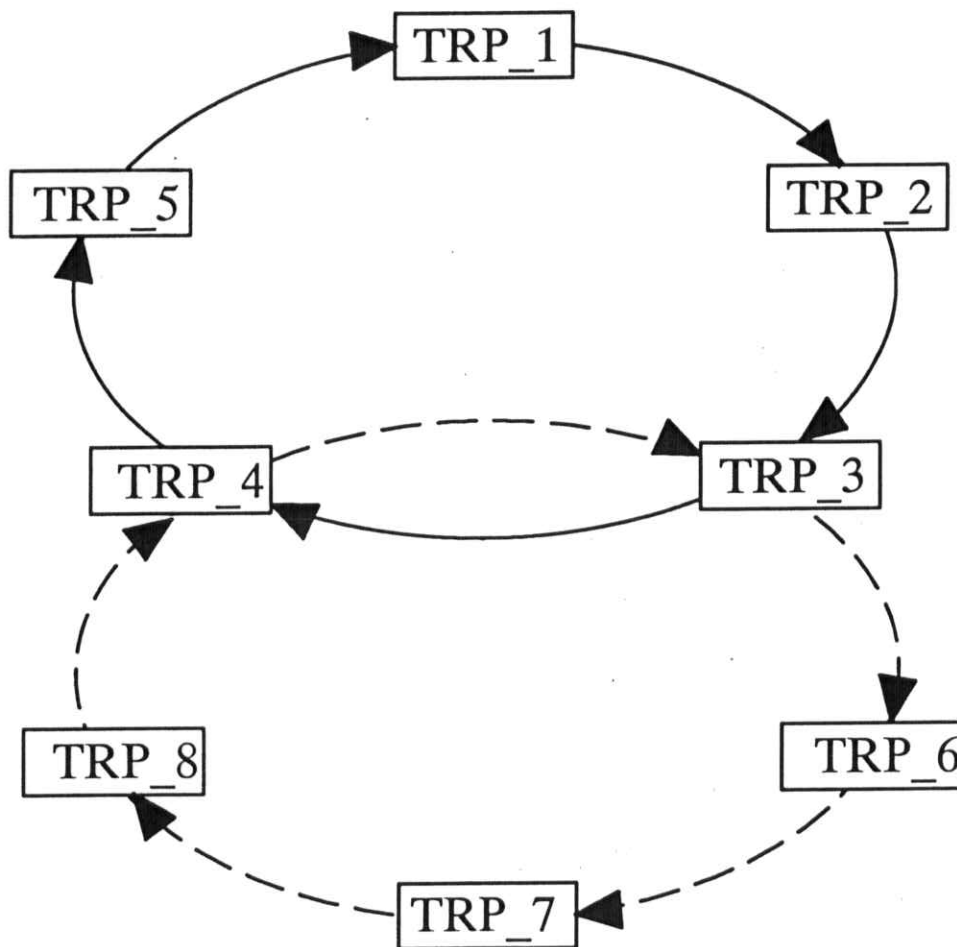
K. Welz, C.-E. Liedtke





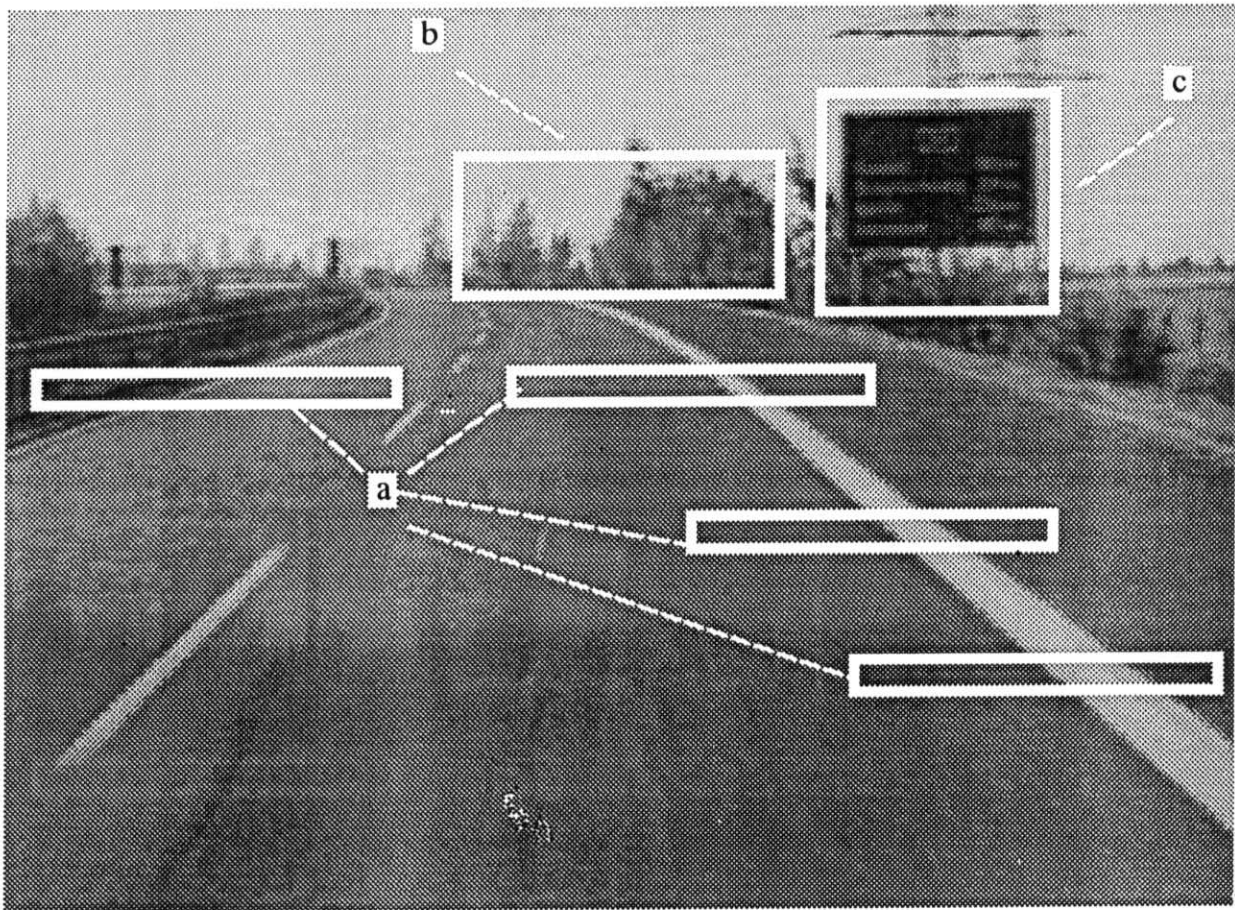




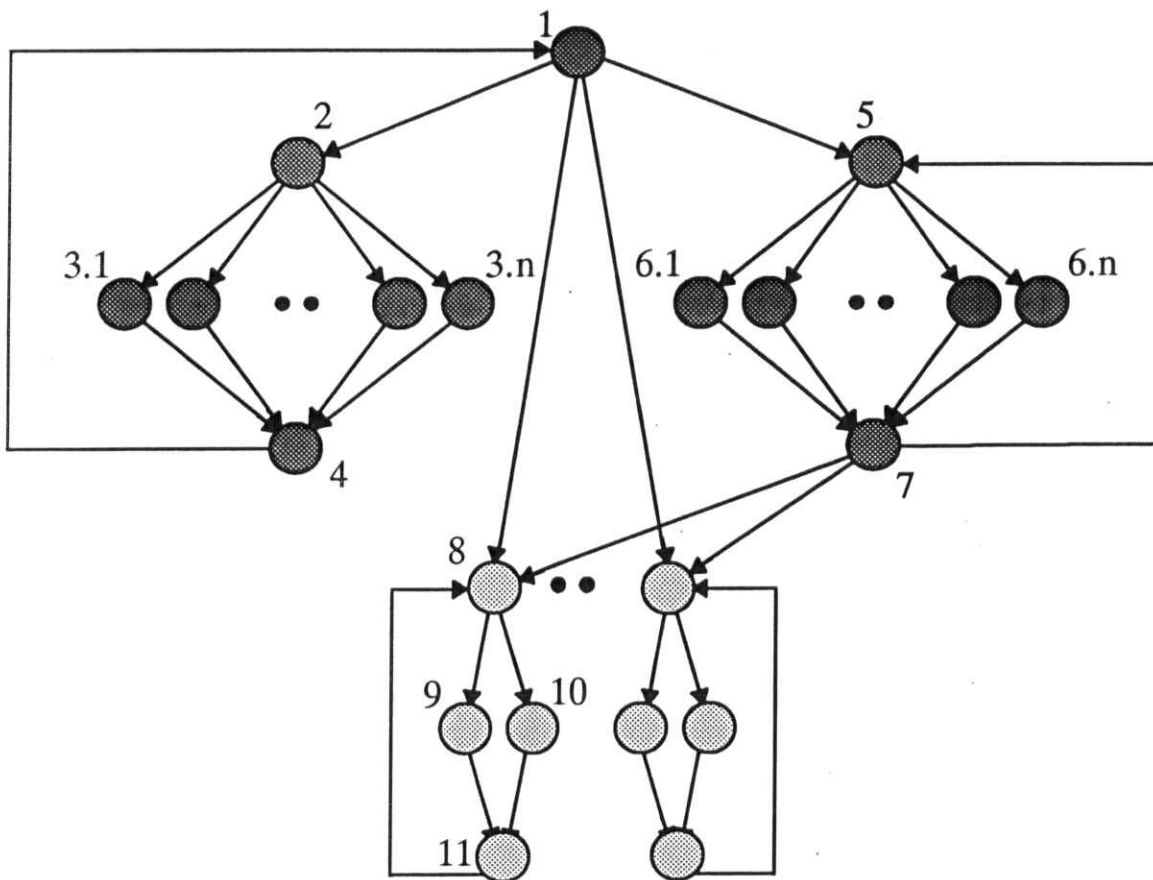


— road edge tracking

--- candidate search, traffic sign
tracking and interpreting



Road Scene with Windows for
(a) Road Edge Tracking,
(b) Candidate Search, and
(c) Traffic Sign Tracking and Interpreting

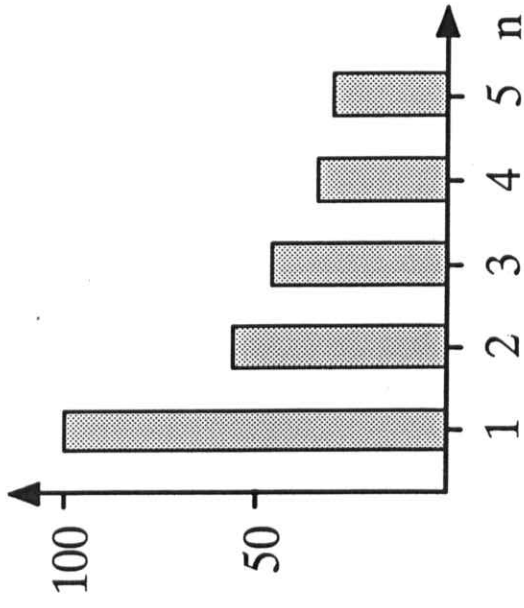


● permanent task
 ● data dependent task

Task 1: `init_road_model`
 Task 2: `init_road_edge_tracking`
 Task 3: `road_edge_tracking`
 Task 4: `update_road_model`

Task 8: `init_traffic_sign_model`
 Task 9: `traffic_sign_tracking`
 Task 10: `traffic_sign_feature_extraction`
 Task 11: `traffic_sign_interpretation`

Task 5: `init_candidate_search`
 Task 6: `candidate_search`:
 - `searching_for_circles`
 - `searching_for_triangles`
 - `searching_for_colored_areas`
 Task 7: `init_candidate_list`



Relative execution time depending on
the number of transputers n

Number of transputers n	Speed up
1	1.00
2	1.70
3	2.20
4	3.10
5	3.30

Speed up depending on
the number of transputers n